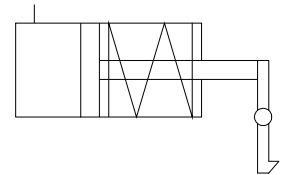
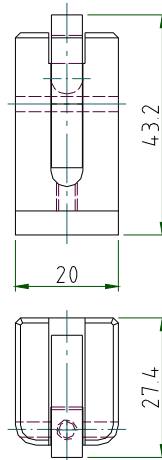
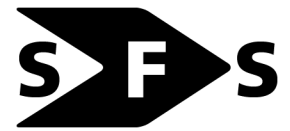


Locking cylinder Ø12mm, stroke 2.2mm



Special feature:

The cylinder and the locking lever are integrated in a housing. The dimensions of the housing are matched to the customer's mounting dimensions. Release is effected either pneumatically or by hand.

Applications:

The locking unit is used to hold various plugs and couplings in position during adapter testing. The test part is pressed against the spring in the holding fixture and released pneumatically or by hand after the test is completed.

SPECIFICATION	
general	
design	cylinder with integrated locking lever
piston diameter	12 mm
stroke lengths	2.2 mm
actuation	pneumatic
return	mechanical spring
connection	M5 internal thread
ambient temperature	-20°C to +80°C
medium temperature	-20°C to +80°C
material	cylinder body aluminum; piston and cover brass; seals perbunan (NBR); spring spring steel; locking lever nickel-plated brass
end stop damper	no
mounting method	M4 thread
mounting position	any
magnetic scanning	no
weight	58 g
pneumatic	
control medium	filtered, lubricated or unlubricated compressed air
operating pressure range	2.5 to 8 bar