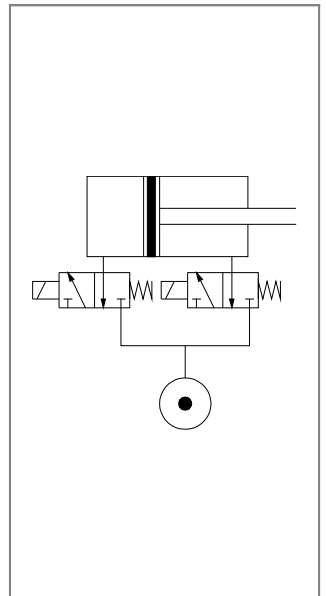
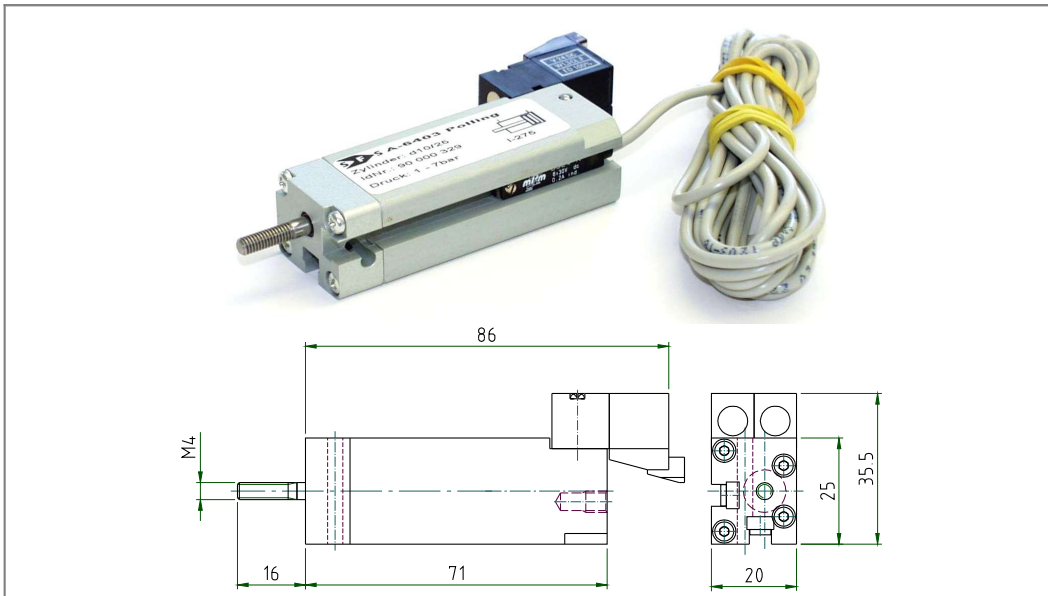
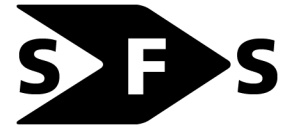


Compact cylinder Ø10mm, stroke 25mm, double acting, with integral valves



Special feature:

Because speed is paramount in applications with this cylinder, a conventional triggering of the cylinder (valve in the switching cabinet) is not an option. The valves were attached directly to the body of the cylinder and the air fed internally to keep the length of the lines as short as possible and thus minimize the response time of the cylinder. The cylinder is delivered complete with solenoid valves.

Applications:

Riveting machines in the automotive industry

SPECIFICATION	
general	
design	cylinder, double-acting, with integrated valves
piston diameter	10 mm
stroke lengths	25 mm
actuation	pneumatic
return	pneumatic
connection	Central M5 internal thread
ambient temperature	-20°C to +80°C
medium temperature	-20°C to +80°C
material	cylinder body, rod cover aluminum; piston rod stainless steel; bolts zinc-plated steel; seals perbunan (NBR) or polyurethane (PUR)
end stop damper	elastomer stop
mounting method	transverse bore in the housing
mounting position	any
magnetic scanning	yes
weight	139 g
pneumatic	
control medium	filtered, lubricated or unlubricated compressed air
operating pressure range	1 to 7 bar
electrical	
voltage	24V DC
permissible voltage variation	-5% +10%
power consumption	1.3 W
configuration	3/2-way NC