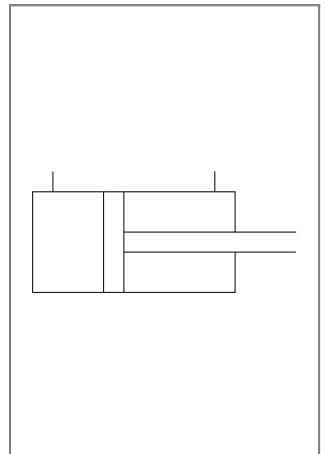
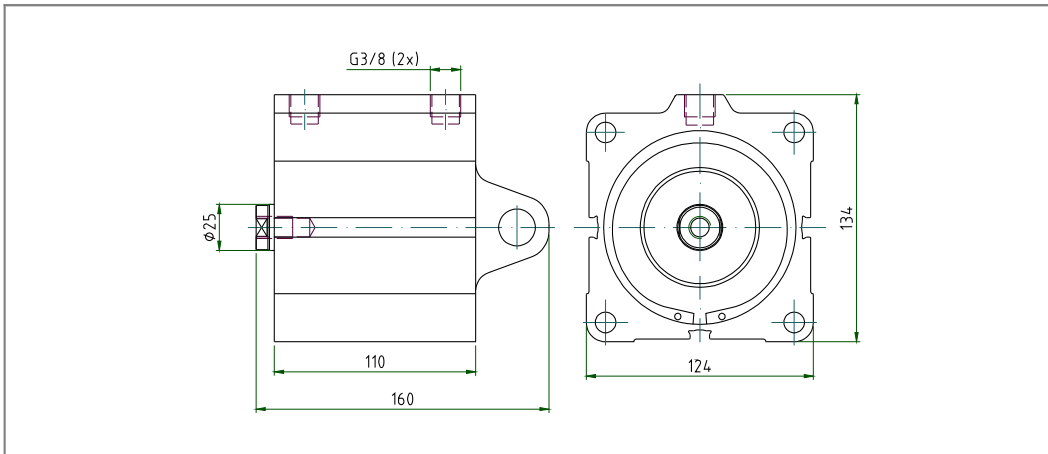
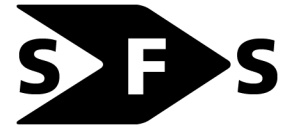


**Short stroke cylinder Ø100mm, stroke 50mm,
double acting**



Special feature:

Operation of the cylinder with water.

Particularly rugged design of the swivel eye due to heavy loads that standard swivel bearings cannot support.

Applications:

Level compensation of caterpillar-type take-offs in plastics extrusion technology.

SPECIFICATION	
general	
design	short stroke cylinder, double-acting
piston diameter	100 mm
stroke lengths	50 mm
actuation	hydraulic
return	hydraulic
connection	G3/8 internal thread
ambient temperature	-20°C to +80°C
medium temperature	-20°C to +80°C
material	cylinder body, rod and base cover anodized aluminum; piston rod stainless steel; seals perbunan (NBR) or polyurethane (PUR)
end stop damper	elastomer stop
mounting method	swivel eye
mounting position	any
magnetic scanning	no
weight	3.8 kg
pneumatic	
control medium	water
operating pressure range	0.5 to 10bar