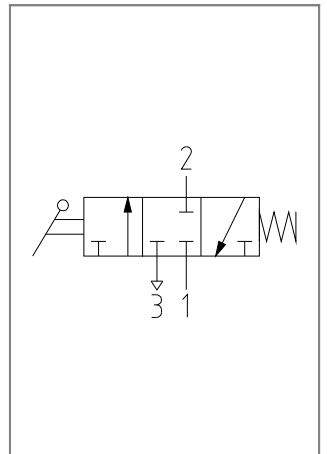
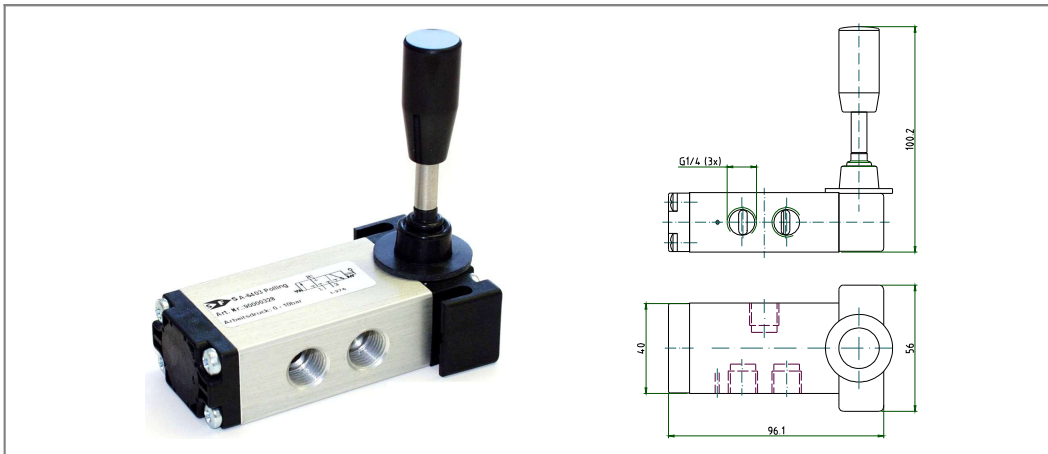
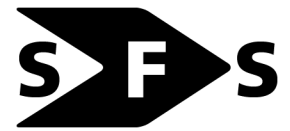


3/3-way hand lever valve NC



Special feature:

3/3-way NC switching function in hand lever design: the valve switches to the spring-centered middle position when not actuated. Mounting according to customer specification.

Applications:

Activation of lifting cushions, firefighting and technical rescue services.

SPECIFICATION	
general	
design	spool valve
actuation	hand lever
return	mechanical spring
connection	G1/4 internal thread
ambient temperature	-30°C to +60°C
medium temperature	-30°C to +60°C
material	body and inner parts: anodized aluminum alloy plastic cover: fiberglass reinforced plastic seals: perbunan (NBR)
mounting method	2 M5 threads with hand lever
mounting position	any
scope of delivery	valve 2 piece M5x20 mounting bolts
weight	241g
pneumatic	
configuration	3/3-way NC
flow medium	filtered (50 micron), lubricated or unlubricated compressed air (also refrigerant-dried to dew point -20°C)
operating pressure range	p max = 12 bar
nominal flow	QNn = 1060 NI/min
nominal size	DN 7mm