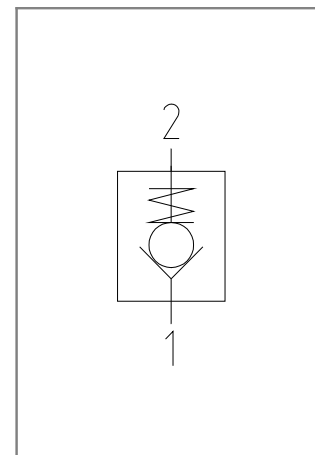
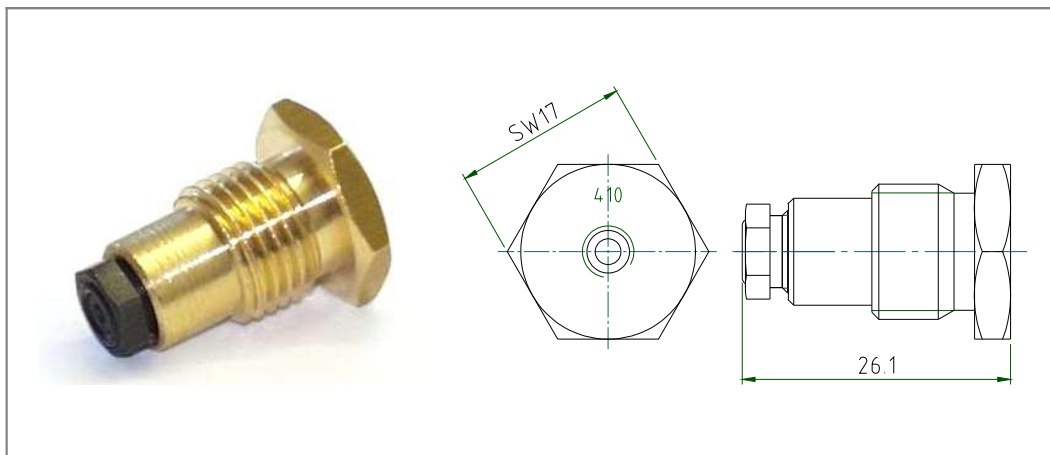


Overflow valve for grease and oil



Special feature

The overflow valves are factory-preset to the desired pressure. Compared with earlier designs, the customer no longer needs to set the pressure. The design was adapted specifically to the customer's holding fixture.

Applications:

Central lubrication systems in commercial trucks, caterpillars, excavators, and similar vehicles, as well as in industrial equipment.

SPECIFICATION	
general	
design	spring-loaded seat valve
function	the valve opens when the set pressure is reached
connection	G1/4 thread
ambient temperature	-30°C to +80°C
medium temperature	-20°C to +80°C
medium	oil and grease
material	metal parts: brass, stainless steel seals: perbunan (NBR)
mounting position	any
weight	20 g
hydraulic	
overflow pressures	50 bar, 80 bar, 120 bar, 200 bar, 270 bar, 350 bar, 410 bar