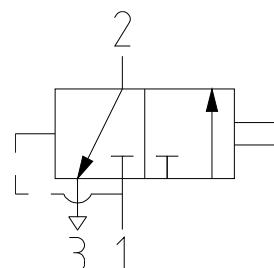
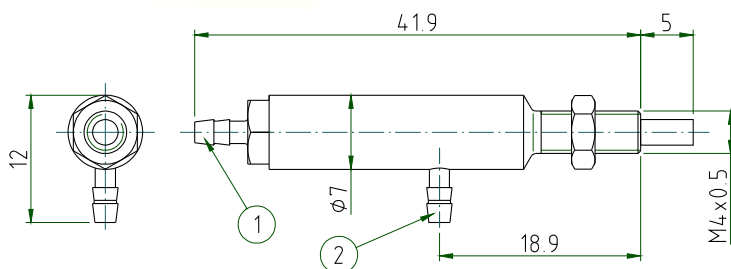


## 3/2-way valve tappet activated



### Special feature:

The valve was adapted especially for the installation conditions of the customer. The tappet is actuated by the movement of another machine component. Cylindrical shape.

### Applications:

Adapter testing technology

SPECIFICATION	
general	
design	spool valve
actuation	tappet
return	pneumatic
connection	barb fittings for hose $\phi 2$
ambient temperature	-20°C to +60°C
medium temperature	-20°C to +60°C
material	body and barb fittings: brass spool: stainless steel seals: perbunan (NBR)
mounting method	M4x0.5 thread on the neck
mounting position	any
scope of delivery	valve fastening nut
pneumatic	
configuration	3/2-way NC
flow medium	filtered, lubricated or unlubricated compressed air
operating pressure	2.5 bar to 8 bar
nominal size	DN 0.8mm