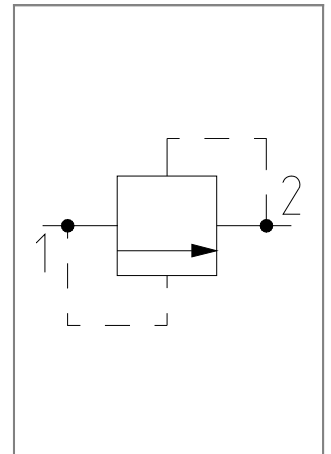
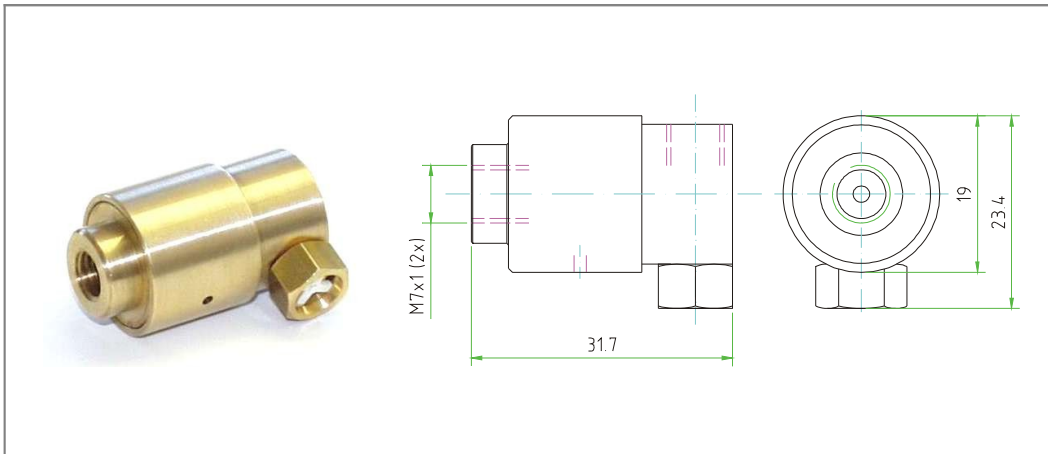
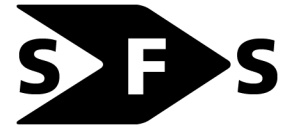


Pressure regulator for CO₂



Special feature:

This pressure regulator is designed to regulate the desired pressure based solely on the different surfaces, without a spring. The primary pressure, which can fluctuate by about 20 bar, plays only a subordinate role. The integrated safety valve opens when the allowable secondary pressure is exceeded.

Applications:

Households, carbonated beverage industry.

SPECIFICATION	
general	
design	piston regulator with attached safety valve
connection	M7x1 internal thread
ambient temperature	10°C to +60°C
medium temperature	-20°C to +60°C
material	metal parts: brass, stainless steel seals: perbunan (NBR)
mounting position	any
weight	53g
pneumatic	
primary pressure	40 bar to 60 bar (CO ₂ bottle)
secondary pressure	set permanently to 10 ± 2 bar
safety valve response pressure	20 bar