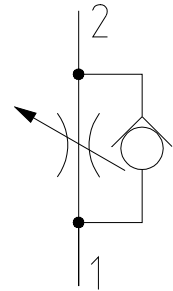
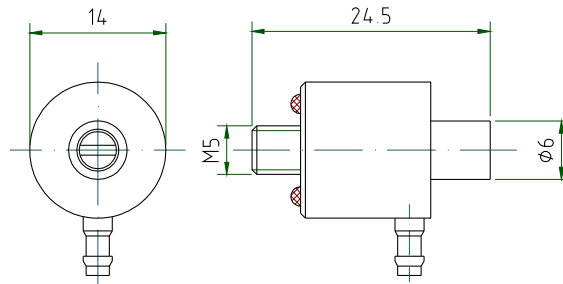
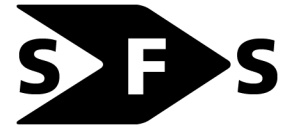


## One way flow control valve M5



### Special feature:

The special design (ball inside a tapered bore) permits fine adjustment of the flow despite compact dimensions. The extremely low flow (1.1 NI/min) in throttle direction is preset in the factory. This saves the customer time-consuming adjustment of the throttle in the assembled device.

### Applications:

Dental industry: dental equipment.

SPECIFICATION	
general	
design	ball inside a tapered bore
actuation	with a screw driver
connection	inlet: barb fitting; outlet: M5
ambient temperature	-20°C to +60°C
medium temperature	-20°C to +60°C
material	metal parts: brass, stainless steel seals: perbunan (NBR)
mounting position	any
weight	18 g
pneumatic	
configuration	3/3-way NC
flow medium	filtered unlubricated compressed air
operating pressure range	1 bar to 10 bar
nominal flow	set in throttle direction to 1.1 NI/min; in return direction 9 NI/min