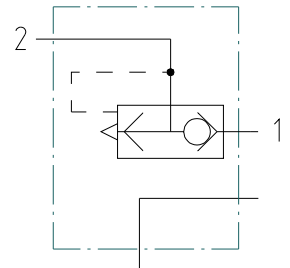
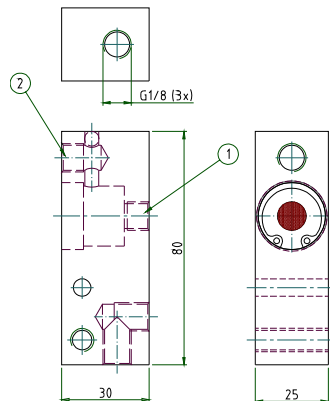
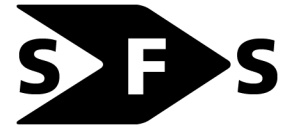


## Connecting plate with integral automatic air valve



### Special feature:

This unit replaces a connecting plate without an automatic air vent plus an automatic air vent with integrated exhaust valve. Due to space limitations, the previous version could no longer be used.

### Applications:

Pressure supply of pantograph cylinders for subway systems

SPECIFICATION	
general	
design	aluminum plate with integrated automatic air vent
actuation	pneumatic
return	pneumatic
connection	G1/8 internal thread
ambient temperature	-25°C to +60°C
medium temperature	-25°C to +60°C
material	body, cover: aluminum seals: perbunan (NBR), polyurethane (PUR)
mounting method	M8 thread
mounting position	any
pneumatic	
flow medium	filtered, lubricated or unlubricated compressed air
operating pressure range	$p_{max} = 10 \text{ bar}$
nominal size	DN 4.5 mm