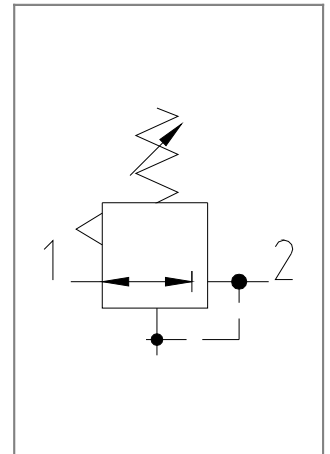
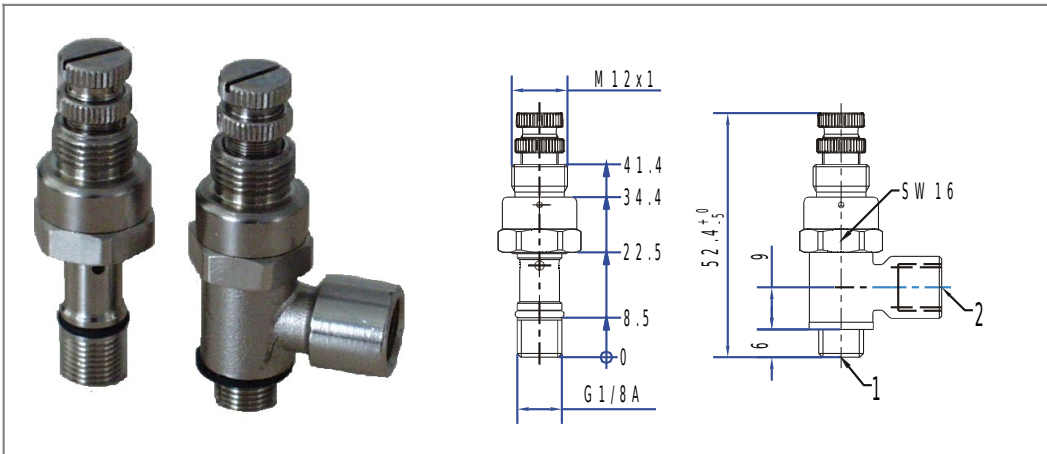


Mini pressure reducer

type MR1.-.



SPECIFICATION	
general	
construction	piston type with secondary exhaust
connection	port 1 (pressure inlet) G1/8" A according to ISO 228 port 2 (outlet) G1/8" according to ISO 228 respective push in raccord for plastic tubes
ambient temperature	-20°C to +60°C
fluid temperature	-20°C to +80°C
material	metal parts: brass nickel plated seals: Perbunan (NBR) springs: stainless steel washer : polyamide
mounting	
installation position	any position, ring piece turntable 360° before the valve is tightened
items supplied	
fluid	neutral gazes, filtered, lubricated or non lubricated compressed air, filter 50 micron
inlet pressure	type MR1.-2 max. 6 bar, type MR1.-8 max. 10 bar
outlet pressure	Type MR1.-2 0.5 – 2 bar, Type MR1.-8 1 – 8 bar
nominal flow	inlet pressure 8 bar, outlet pressure 6 bar and a pressure drop of 1 bar: 75 NI/min
nominal diameter	DN 2.5 mm
special version (on request)	supplied with secondary exhaust, for liquids

Type	article-nr.	outlet pressure (bar)	outlet (2)	weight (appr.) g
MR1X-2	90 000 530	0.5 – 2	hollow screw	28
MR1X-8	90 000 531	1 – 8	hollow screw	28
MR11-2	90 000 532	0.5 – 2	ring piece G1/8	45
MR11-8	90 000 533	1 – 8	ring piece G1/8	45
MR1A-2	90 000 534	0.5 – 2	ring piece Ø4	45
MR1A-8	90 000 535	1 – 8	ring piece Ø4	45
MR1C-2	90 000 536	0.5 – 2	ring piece Ø6	46
MR1C-8	90 000 537	1 – 8	ring piece Ø6	46

