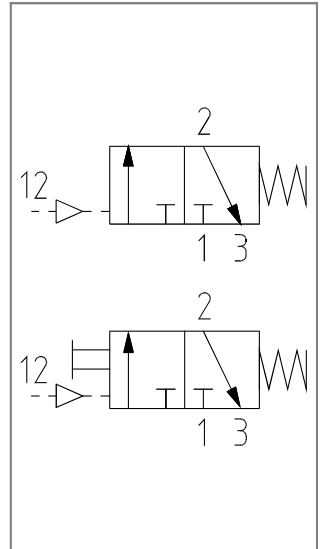
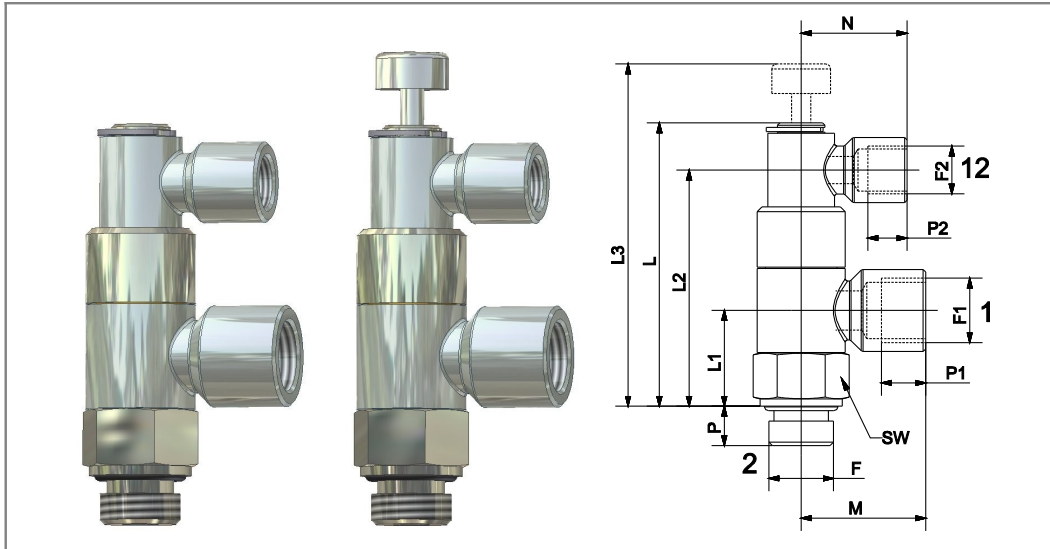


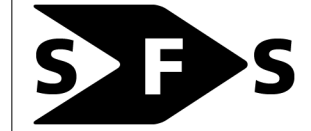
## 3/2-way non return valve pneumatic controlled

type HEP..., size 1/8" and 1/4"  
 type HEP...M, size 1/8" and 1/4", with manual override



SPECIFICATION	
general	
type	3/2-spool valve, normal closed (NC)
operator	pneumatic or manual
return	spring return
ports	port 2: male thread BSP, port 1: female thread BSP or push in raccord port 12: female thread M5 or 1/8" BSP
ambient temperature	-10°C to +70°C
fluid temperature	-10°C to +70°C
material	metal parts: brass nickel plated and stainless steel springs: stainless steel seals: perbunan (NBR)
installation	in any position, ring pieces revolvable also if the valve is tightened
pneumatic	
fluid	neutral gazes, filtered, lubricated or non lubricated compressed air, other fluids on request
operating pressure	0 - 10 bar
control pressure	see diagram

type	article-nr.	F	F1	F2	L	L1	L2	L3	M	N	P	P1	P2	SW	weight (approx. g)
HEP111	90 000 438	G1/8 A	G1/8	G1/8	51.5	16	42		21.5	21.5	6	7	7	14	66
HEP1CA	90 000 439	G1/8 A	6	4					25	25		-	-		
HEP221	90 000 440	G1/4 A	G1/4	G1/8					25.5	21.5		8	7		
HEP2CA	90 000 441	G1/4 A	6	4	57.5	19.5	48		27.5	25	8	-	-	17	102
HEP2DA	90 000 442	G1/4 A	8						32			-	-		
HEP111M	90 000 443	G1/8 A	G1/8	G1/8						16		42	64.5		
HEP1CAM	90 000 444	G1/8 A	6	4	25	25	-	-							
HEP221M	90 000 445	G1/4 A	G1/4	G1/8	25.5	21.5	8	7							
HEP2CAM	90 000 446	G1/4 A	6	4	19.5	48	71.0		27.5	25	8	-	-	17	106
HEP2DAM	90 000 447	G1/4 A	8						32			-	-		



## 3/2-way non return valve pneumatic controlled

type HEP..., size 1/8" and 1/4"  
 type HEP...M, size 1/8" and 1/4", with manual override

size	DN (mm)	QNn 1→2 (NI/min)	QNn 2→3 (NI/min)	max. torque moment (Nm)
1/8"	4.0	300	75	3.0
1/4"	5.6	700	100	7.0

### Control pressure

