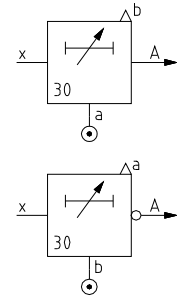
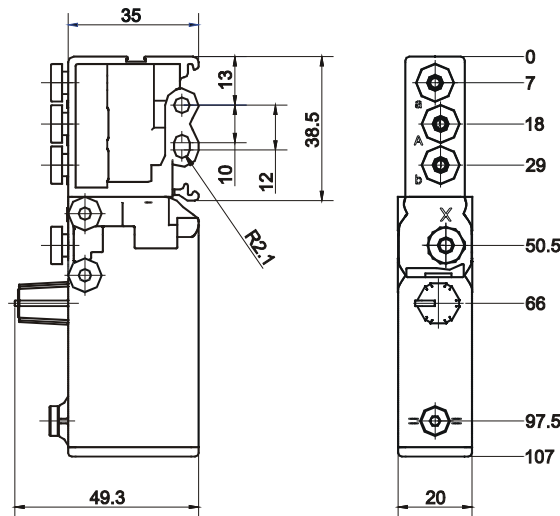


Time delay valve

type ZV-A, 3/2 NC or 3/2 NO



Using the inlet port *a* the timer valve has a positive outlet (A), using *b* it has a negative outlet (A). Each of the free connections *a* or *b* then serves as exhaust.

SPECIFICATION	
general	
construction	poppet valve
operator	pneumatic
return	mechanical spring
connection	push-in connection for calibrated tubes 4 mm diameter
ambient temperature	-10°C to +50°C
fluid temperature	-10°C to +50°C
humidity	0 – 100% r.H.
material	body: POM inner parts: brass, POM seals: perbunan (NBR) springs: stainless steel
mounting	snap on to Ω-rail according to DIN 50022 or 2 holes for M4 screws
installation position	any position
pneumatic	
function	usable with 3/2 NC or 3/2 NO-outlet, according to use of inlet pressure <i>a</i> or <i>b</i>
time delay	0 – 30 seconds
fluid	filtered (20 µm), lubricated or non lubricated compressed air
operating pressure	2,5 to 8 bar
nominal flow	QNn = 100 NI/min (p ₁ = 6 bar, Δp = 1 bar)
nominal diameter	DN 2.7 mm
repeat interval	< 0.5 seconds
repeating accuracy	± 2%

type	article-nr.	description	time range (seconds)	colour button	weight (approx. g)
ZV-A30	90 000 461	time delay valve	0 - 30	orange	75