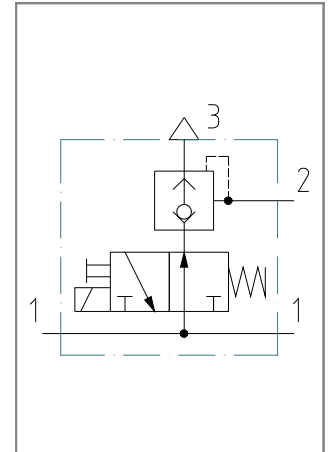
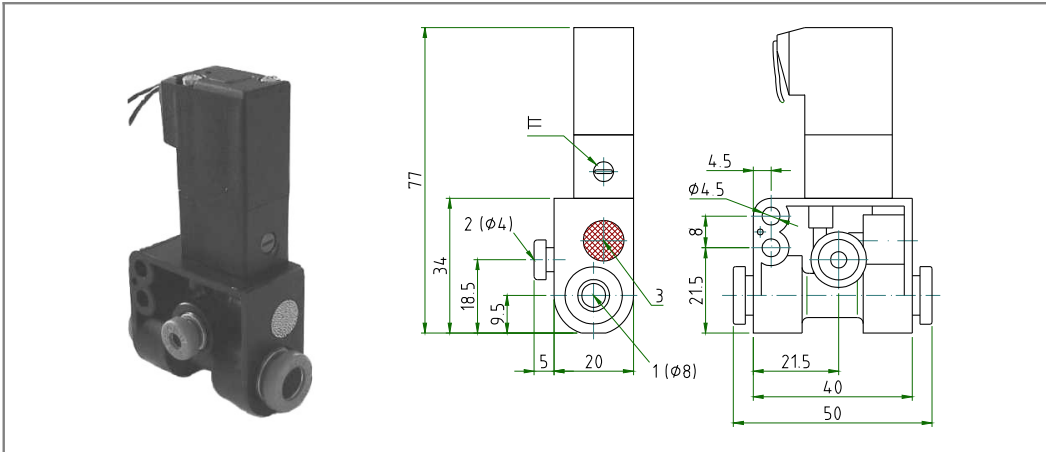
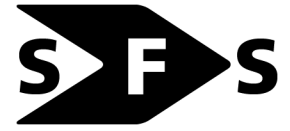


**3/2-way solenoid valve with integrated quick exhaust valve**

Typ V01



SPECIFICATION	
general	
type	3/2-way poppet valve, normal open, with integrated quick exhaust valve
operator	solenoid or bistable manual override
ports	inlet ports push in raccord diameter 8 mm (2 pieces), outlet port push in raccord diameter 4 mm, exhaust through silencer plate
ambient temperature	-20 °C to +60 °C
fluid temperature	-20 °C to +60 °C
material	valve body POM, seals NBR, internal parts POM and stainless steel, silencer plate bronze
mounting	2 holes
installation	in any position
electrical Data	
standard voltage	24V DC
special voltage	12V DC, 24V AC, 48V AC, 110V AC
voltage tolerance	± 10 %
power consumption	2,5 Watt
duty cycle	100 % ED
protection class	IP 54
electrical connection	flying leads, length 300 mm
pneumatic	
function	3/2 NO
fluid	filtered, lubricated or non lubricated air
operating pressure	0 – 8 bar
nominal flow	QNn: P -> A: 16 NI/min, A -> R: 125 NI/min (p1 = 6 bar, Δp = 1 bar)
nominal diameter	DN 0.8 mm
switch time	10 – 20 ms
max. operating Frequency	300 / min
special functions	electrical connection by connector similar to DIN 43650, form C, valve instead 3/2 NO in 3/2 NC

type	article-nr.	function	weight (approx. g)
V01	<b>90 000 339</b>	3/2 NO	80