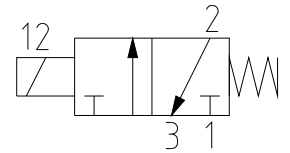
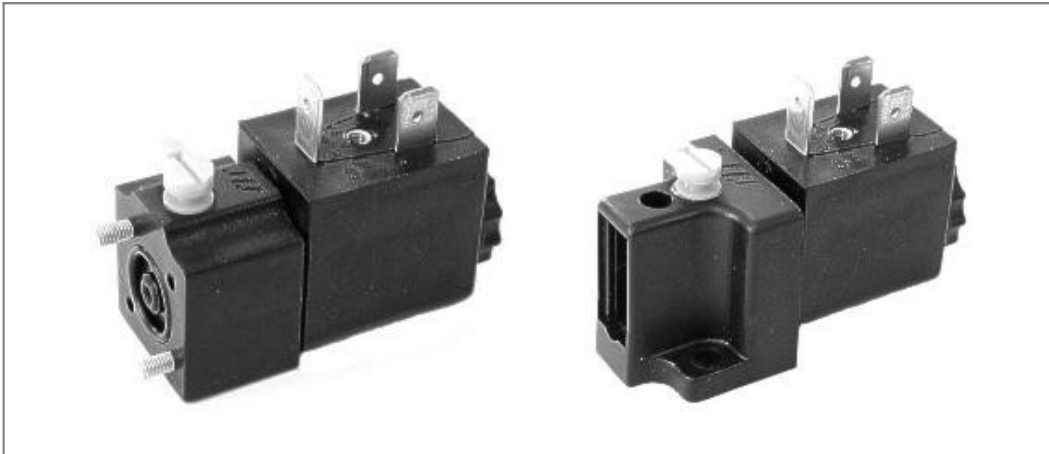
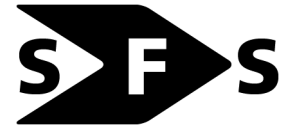


Direct operated 3/2-way solenoid valve flanged

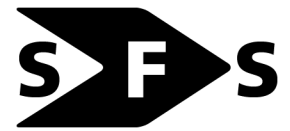
type V10C-.



SPECIFICATION	
general	
type	poppet valve
operator	solenoid or by manual override, manual override is equipped with a monostable function (push) and a bistable function (push and turn). The manual override element may be cut off, after which it can be operated by screwdriver only.
Port	flanged
ambient Temperature	-20°C to +50°C
fluid Temperature	-20°C to +50°C
material	body, manual override: POM seals: perbunan (NBR) internal parts: brass, stainless steel coil: encapsulated (polyamide)
mounting	with screws to subbase
installation	in any position
unit of supply	type V10CA-...: valve, flange O-rings 2.31x1.5, 11.5x1.5, 2 screws DIN 965-M3x23,5 type V10CB-...: valve, 2 screws DIN 7985-M4x10
electrical Data	
standard voltage	24V DC, 24V AC (50-60Hz), 110V AC (50-60Hz), 230V AC (50-60Hz),
special voltage	12 - 250V AC, 6 - 110V DC
voltage tolerance	± 10%
power consumption	AC: inrush 6VA, holdpower 4.3VA DC: 2.6W (warm), 3W (cold)
duty cycle	100% , continuous operation
protection class	IP65 with correctly mounted connector according to DIN 40050
electrical connection	connector PG9 (see optionals)

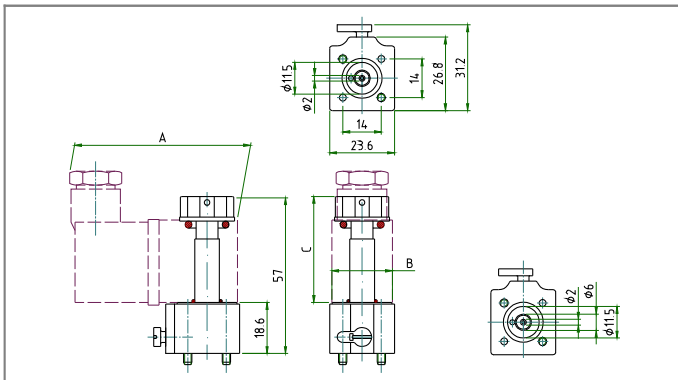
Direct operated 3/2-way solenoid valve flanged

type V10C-

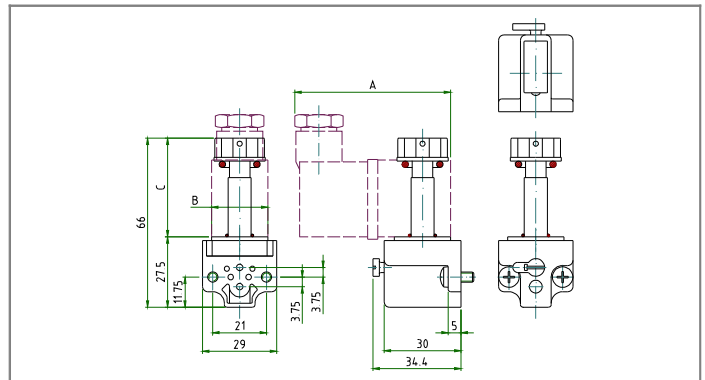


pneumatic function	3/2 NC
fluid	filtered, lubricated or non lubricated compressed air
operating pressure	0 to 10bar
nominal flow	Q _{Nn} (p ₁ =6bar, Δp=1bar) =43NI/min from P(1) to A(2), 56NI/min from A(2) to R(3)
nominal diameter	DN 1.2mm (body), DN 1.5mm (exhaust)
switch time	10 to 20ms
cycles per minute	max. 1200/min
specials	valves are also available with explosion proofed coils EExmIICT5 und T6, and with intrinsic safety version EExialICT6
special equipment	seals in FPM, function 2/2-NC, 2/2-NO, 3/2-NO
optionals	subbases for concentric and CNOMO mounting surfaces

TYP V10CA - B1215 - . D concentric mounting surface



TYP V10CB - B1215 - . D CNOMO - mounting surface



General information: pressure range 0 to 10bar, function 3/2 NC, Nominal diameter 1.2mm, exhaust orifice 1.5mm

type	article-nr.	mounting surface	coil type	manual override	flow regulation P →A	A (mm)	B (mm)	C (mm)	weight without coil (approx. g)
V10CA-B1215-MD	90 000 063	concentric	DA, DB DC, DD DE, DW DX, DY	yes	no	59	22	39	35
V10CA-B1215-OD	90 000 276	concentric		no	no	59	22	39	35
V10CB-B1215-MD	90 000 079	CNOMO		yes	no	59	22	39	40
V10CB-B1215-OD	90 000 078	CNOMO		no	no	59	22	39	40
V10CB-B1215-BD	90 000 080	CNOMO		yes	yes	59	22	39	50
V10CB-B1215-AD	90 000 081	CNOMO		no	yes	59	22	39	50

Models for intrinsic safety coil EExialICT6

type	article-nr.	mounting surface	coil type	manual override	flow regulation P →A	A (mm)	B (mm)	C (mm)	weight without coil (approx. g)
V10CA-B1215-MD-0001	90 000 085	concentric	DZ	yes	no	67	30	39	35
V10CB-B1215-MD-0001	90 000 277	CNOMO	DZ	yes	no	67	30	39	50