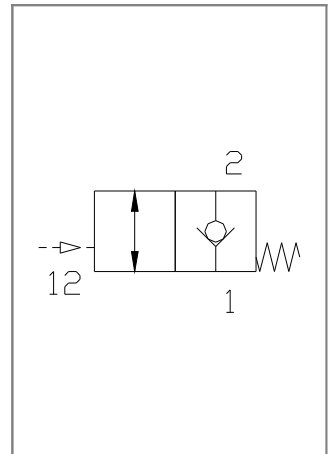
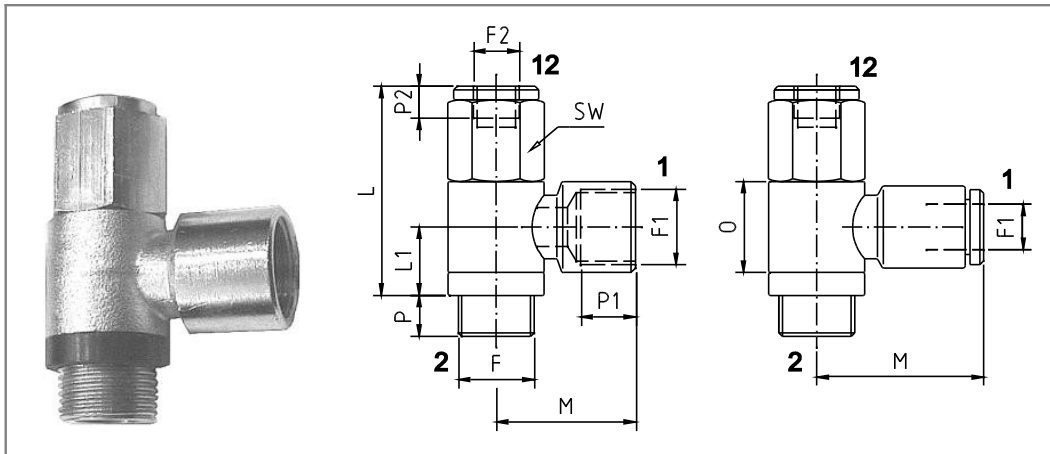


## Non return valve pneumatic controlled

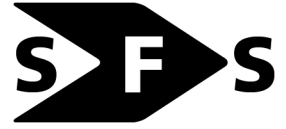
type HRP..., size 1/8" to 1/2"



SPECIFICATION	
general	
type	non return valve with elastic seat
operator	by compressed air
return	spring return
ports	port 2 male thread BSP, port 1 female thread BSP or push in raccord, port 12 female thread M5 or 1/8" BSP
ambient temperature	-10°C to +60°C
fluid temperature	-10°C to +60°C
material	metal parts: brass nickel plated and stainless steel springs: stainless steel seals: perbunan (NBR), washer nylon
installation	in any position, ring piece turn able 360° before the valve is tightened
pneumatic	
fluid	neutral gazes, filtered, lubricated or non lubricated compressed air, other fluids on request
operating pressure	0.3 - 10 bar
control Pressure	see diagram

type	article-nr.	F	F1	F2	L	L1	M	O*	P	P1	P2	SW	weight (approx. g)				
HRP1X*	<b>90 000 038</b>	G1/8 A	-	M5	37-37.5	-	-	14.5-15	6.5-7	-	6	14	30				
HRP11	<b>90 000 039</b>	G1/8 A	G1/8		37.5	12.5	21	15	6.5	7			48				
HRP1C	<b>90 000 146</b>	G1/8 A	6		25	-	-	16-17	7-9.5	-			48				
HRP2X*	<b>90 000 023</b>	G1/4 A	-	G1/8	40-42.5	-	-	16-17	7-9.5	-	7	17	50				
HRP22	<b>90 000 040</b>	G1/4 A	G1/4		42.5	13.5	25	17	7	8			75				
HRP2C	<b>90 000 147</b>	G1/4 A	6		27.5	-	-	16-17	7-9.5	-			75				
HRP2D	<b>90 000 148</b>	G1/4 A	8		32	-	-	16-17	7-9.5	-			82				
HRP33	<b>90 000 110</b>	G3/8 A	G3/8	G1/8	46	15	31	20	9	10	7	19	120				
HRP3D	<b>90 000 149</b>	G3/8 A	8				31.5			-			-	16-17	7-9.5	-	110
HRP3E	<b>90 000 150</b>	G3/8 A	10				36			-			-	16-17	7-9.5	-	120
HRP44	<b>90 000 151</b>	G1/2 A	G1/2	G1/8	51.5	17	40	24	10	14	24	24	210				
HRP4F	<b>90 000 152</b>	G1/2 A	12				40.5			-			-	16-17	7-9.5	-	210

\* Valves HRP.X are without ring piece. It's possible to use ring pieces in push in or push on version with inside diameter 9.6 mm and length 14.5 - 15 mm for size 1/8", inside diameter 13.2 mm and length 16 - 17 mm for size 1/4".



## Non return valve pneumatic controlled

type HRP..., size 1/8" to 1/2"

size	DN [mm]	QN 1→2 [NI/min]	QN 2→1 [NI/min]	max. torque moment [Nm]	min. pressure in flow direction [bar]
1/8"	3.0	220	280	1.2	0.2
1/4"	4.4	340	460	1.8	0.2
3/8"	5.7	700	910	3.5	0.2
1/2"	8.8	1450	1660	4.0	0.15

### control pressure

