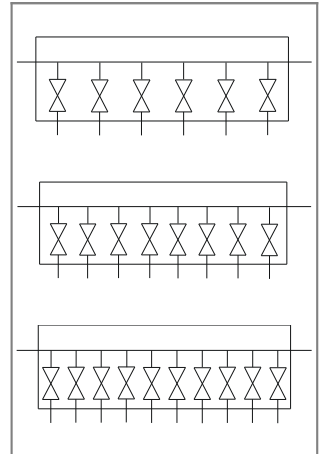
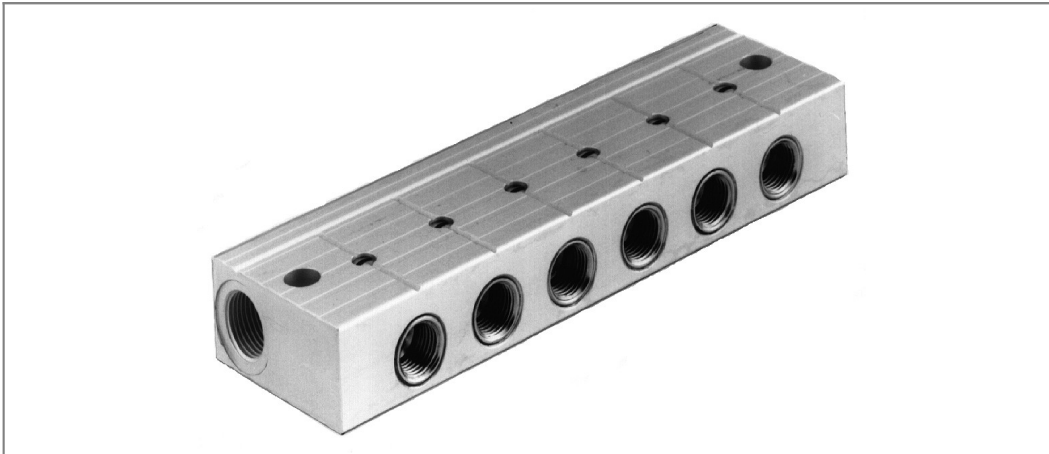
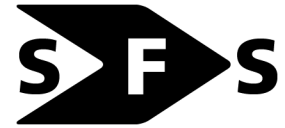
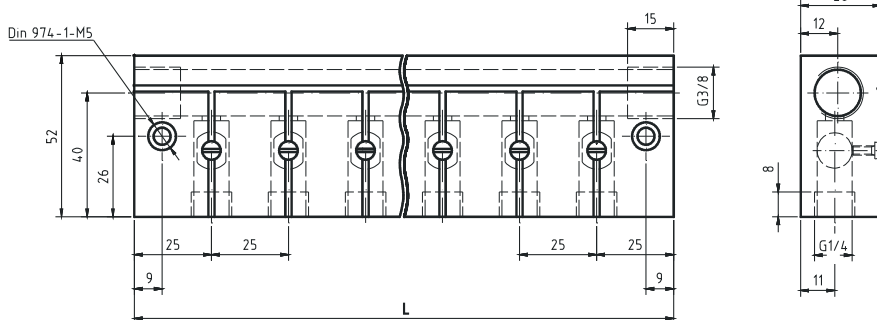


# Distributor block with integral ball valves

type KPV



SPECIFICATION	
description	distributor block with integral ball valves
type	KPV 5226-...E
pressure range	vacuum to 10 bar
operation	screwdriver (width 4 to 6 mm)
rotation angle	90°
temperature range	-10° C to +100° C
orifice (per channel)	DN 8 mm
material	body: anodised aluminium alloy ball and spindle: chromed brass ball seals: teflon (PTFE) O-Ring: perbunan (NBR)
mounting	via 2 holes in body, for M5 screws
other versions	on application: specified number of outlets, control knob operation



This handy unit serves as a compact distributor and isolator block in complex machines and installations, where it is necessary to open or close individual circuits.

The slot in the spindles indicates the open or closed status of the individual channels.

type	article-nr.	number of outlets	length (mm)	weight (approx. g)
KPV 5226 - 6E	<b>90 000 010</b>	6	175	650
KPV 5226 - 8E	<b>90 000 427</b>	8	225	730
KPV 5226 - 10E	<b>90 000 459</b>	10	275	890